



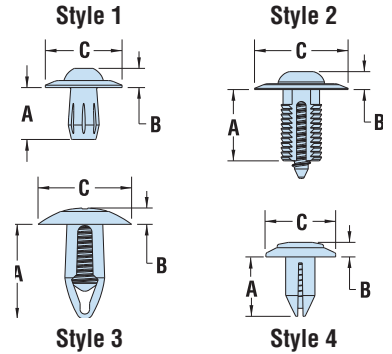
## HEYClip™ Unscrewing Snap Rivets



| WILL FIT THESE PANELS |     |                           |          |          |          | PART NO.    | DESCRIPTION  | PART DIMENSIONS |               |                 |     |     |      | STYLE |
|-----------------------|-----|---------------------------|----------|----------|----------|-------------|--------------|-----------------|---------------|-----------------|-----|-----|------|-------|
| MOUNTING HOLE DIA.    |     | ASSEMBLED PANEL THICKNESS |          |          |          |             |              | A Length        | B Head Height | C Head Diameter |     |     |      |       |
| in.                   | mm. | Min. in.                  | Max. in. | Min. mm. | Max. mm. |             |              |                 |               | in.             | mm. |     |      |       |
| <b>HUSR Series</b>    |     |                           |          |          |          |             |              |                 |               |                 |     |     |      |       |
| .197                  | 5,0 | .059                      | 1,5      | .236     | 6,0      | <b>4330</b> | HUSR 197-059 | .43             | 11,0          | .15             | 3,9 | .47 | 12,0 | 1     |
| .236                  | 6,0 |                           |          |          |          | <b>4331</b> | HUSR 236-059 |                 |               |                 |     | .63 | 16,0 |       |
| .250                  | 6,4 | .125                      | 3,2      | .173     | 4,4      | <b>4392</b> | HUSR 250-125 | .50             | 12,7          | .12             | 3,0 | .59 | 15,1 | 4     |
| .315                  | 8,0 | .125                      | 3,2      | .217     | 5,5      | <b>4333</b> | HUSR 315-276 | .80             | 20,3          | .14             | 3,6 | .79 | 20,0 |       |

Standard color black.

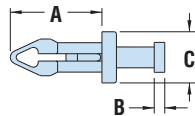
- Phillips head screw driver required for removal.



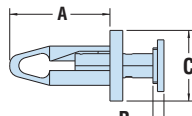
## HEYClip™ Tough Rivets

| WILL FIT THESE PANELS       |             |                           |             |             |             |                      |               | PART NO.     | DESCRIPTION | PART DIMENSIONS |      |     |     |     |      |
|-----------------------------|-------------|---------------------------|-------------|-------------|-------------|----------------------|---------------|--------------|-------------|-----------------|------|-----|-----|-----|------|
| MOUNTING HOLE DIAMETER      |             | ASSEMBLED PANEL THICKNESS |             |             |             | A Length Below Panel | B Head Height |              |             | C Head Diameter |      |     |     |     |      |
| Minimum in.                 | Maximum mm. | Minimum in.               | Maximum in. | Minimum mm. | Maximum mm. |                      |               |              |             |                 |      |     |     |     |      |
| <b>Mini - MTR Series</b>    |             |                           |             |             |             |                      |               |              |             |                 |      |     |     |     |      |
| .122                        | 3,1         | .128                      | 3,3         | .155        | 3,9         | .180                 | 4,6           | <b>12475</b> | MTR 180-125 | .37             | 9,4  | .05 | 1,3 | .22 | 5,5  |
| .144                        | 3,7         | .154                      | 3,9         | .265        | 6,7         | .290                 | 7,4           | <b>12477</b> | MTR 290-150 | .47             | 11,9 | .05 | 1,3 | .30 | 7,6  |
| <b>Standard - TR Series</b> |             |                           |             |             |             |                      |               |              |             |                 |      |     |     |     |      |
| .193                        | 4,9         | .205                      | 5,2         | .059        | 1,5         | .181                 | 4,6           | <b>12466</b> | TR 181-199  | .45             | 11,3 | .08 | 2,1 | .28 | 7,2  |
| .250                        | 6,4         | .276                      | 7,0         | .098        | 2,5         | .315                 | 8,0           | <b>12468</b> | TR 315-263  | .90             | 22,8 | .11 | 2,8 | .59 | 15,0 |
| .315                        | 8,0         | .325                      | 8,3         | .118        | 3,0         | .315                 | 8,0           | <b>12469</b> | TR 315-320  | .83             | 21,1 | .09 | 2,3 |     |      |

Standard color black.



MTR Series



TR Series



- Molded from impact modified nylon for vibration resistance.
- One-piece design requires no tools for installation.
- Provide solid, vibration-resistant connections by means of front mount, blind side fixing.
- Provide neat and smooth finishes for fastening applications.
- Removable by pulling the pin out of the grommet; reusable.

## HEYClip™ Removable Rivets

ALL NEW PRODUCTS

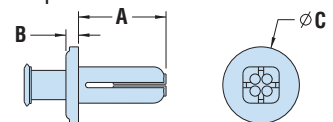
| WILL FIT THESE PANELS  |     |                           |     | PART NO.      | DESCRIPTION | PART DIMENSION       |               |                 |     |     |      |
|------------------------|-----|---------------------------|-----|---------------|-------------|----------------------|---------------|-----------------|-----|-----|------|
| Mounting Hole Diameter |     | Assembled Panel Thickness |     |               |             | A Length Below Panel | B Head Height | C Head Diameter |     |     |      |
| in.                    | mm. | in.                       | mm. |               |             |                      |               | in.             | mm. | in. | mm.  |
| .188                   | 4,8 | .062                      | 1,6 | <b>12220</b>  | HRR 062-188 | .50                  | 12,7          | .07             | 1,8 | .38 | 9,5  |
|                        |     | .125                      | 3,2 | <b>12221</b>  | HRR 125-188 |                      |               |                 |     |     |      |
| .250                   | 6,4 | .062                      | 1,6 | <b>12222*</b> | HRR 062-250 | .50                  | 12,7          | .07             | 1,8 | .44 | 11,1 |
|                        |     | .125                      | 3,2 | <b>12223</b>  | HRR 125-250 |                      |               |                 |     |     |      |
|                        |     | .187                      | 4,7 | <b>12224</b>  | HRR 187-250 |                      |               |                 |     |     |      |

Standard color natural.

\*Will also fit .210"/.218" square hole (for Darling Shelves).



- Two-piece rivet can be removed by retracting the pin then the body.
- Slot in line with pin for pin removal with small screw driver, fingernail or other sharp edge underneath the head of the pin.



HRR Series

|                     | HUSR (Style 1,2)              | HUSR (Style 3)                   | HUSR (Style 4)                | MTR                           | TR                            | HRR                           |
|---------------------|-------------------------------|----------------------------------|-------------------------------|-------------------------------|-------------------------------|-------------------------------|
| Material            | Nylon 6/6                     | Base: Nylon 6, UL 94 V-2         | Nylon 6, UL 94 V-2            | Nylon 6                       | Nylon 6/6                     | Nylon 6/6                     |
| Flammability Rating | UL 94 V-2                     | Drive Pin: Acetal (POM) UL 94 HB | UL 94 V-2                     | UL 94 V-2                     | UL 94 V-2                     | UL 94 V-2                     |
| Temperature Range   | -40°F (-40°C) to 185°F (85°C) | -40°F (-40°C) to 185°F (85°C)    | -22°F (-30°C) to 167°F (75°C) | -22°F (-30°C) to 167°F (75°C) | -40°F (-40°C) to 185°F (85°C) | -40°F (-40°C) to 185°F (85°C) |