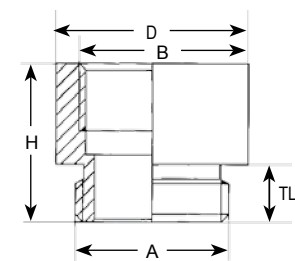
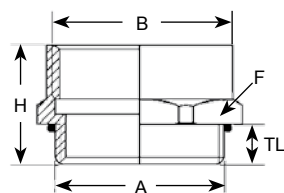


Dealing with foreign products?
Is connecting a challenge?
Well, look no further!



(AF-xxxx-BR & AP-xxxx-BR)



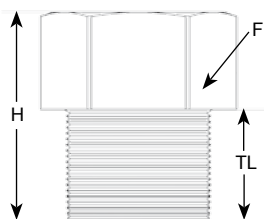
(AG-xxxx-BR & AM-xxxx-BR)

More custom parts available online
at www.SealconUSA.com
or upon request!

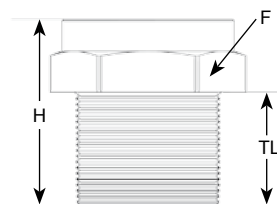
Operating Temperature: -40°F to 212°F (-40°C to 100°C)
(Nickel Plated Brass Adapters with O-Ring):

Thread Adapters: NPT to PG Threads*					
Part Numbers	Threads		Dimensions in Inches (mm)		
	Male Thread A	Female Thread B	F	TL	H
			Wrench Flat	Thread Length	Height
AN-1407-BR	1/4" NPT	PG 7	.75 (19)	.59 (15)	.98 (25)
AN-1209-BR	1/2" NPT	PG 9	.98 (25)	.79 (20)	1.18 (30)
AN-1211-BR	1/2" NPT	PG 11	.98 (25)	.79 (20)	1.18 (30)
AN-1213-BR	1/2" NPT	PG 13/13.5	.98 (25)	.79 (20)	1.18 (30)
AN-1221-BR	1/2" NPT	PG 21	1.30 (33)	.79 (20)	1.26 (32)
AN-3421-BR	3/4" NPT	PG 21	1.30 (33)	.67 (17)	1.22 (31)
AN-1029-BR	1" NPT	PG 29	1.61 (41)	.98 (25)	1.57 (40)

*O-Ring not included



(AN-xxxx-BR)



(AT-xxxx-BR)

Thread Adapters: NPT to Metric Threads*					
Part Numbers	Threads		Dimensions in Inches (mm)		
	Male Thread A	Female Thread B	F	TL	H
			Wrench Flat	Thread Length	Height
AT-1216-BR	1/2" NPT	M16 x 1.5	.98 (25)	.79 (20)	1.18 (30)
AT-1220-BR	1/2" NPT	M20 x 1.5	.98 (25)	.79 (20)	1.18 (30)
AT-1225-BR	1/2" NPT	M25 x 1.5	1.26 (32)	.79 (20)	1.18 (30)
AT-3425-BR	3/4" NPT	M25 x 1.5	1.24 (31.6)	.75 (19)	1.18 (30)
AT-1032-BR	1" NPT	M32 x 1.5	1.50 (38)	.98 (25)	1.61 (41)
AT-5432-BR	1-1/4" NPT	M32 x 1.5	1.67 (42.5)	.59 (15)	1.30 (33)

*O-Ring not included.

See page 56 for thread specifications.

Thread Adapters: PG to NPT Threads					
Part Numbers	Threads		Dimensions in Inches (mm)		
	Male Thread A	Female Thread B	F	TL	H
			Wrench Flat	Thread Length	Height
AG-0912-BR*	PG 9	1/2" NPT	.94 (24)	.24 (6)	.94 (24)
AG-1112-BR	PG 11	1/2" NPT	.94 (24)	.24 (6)	.89 (22.7)
AG-1312-BR	PG 13/13.5	1/2" NPT	.94 (24)	.26 (6.5)	.93 (23.5)
AG-1612-BR	PG 16	1/2" NPT	.94 (24)	.26 (6.5)	.91 (23)
AG-2112-BR	PG 21	1/2" NPT	1.18 (30)	.28 (7)	.59 (15)
AG-2134-BR	PG 21	3/4" NPT	1.18 (30)	.28 (7)	.94 (24)
AG-2910-BR	PG 29	1" NPT	1.57 (40)	.31 (8)	.79 (20)

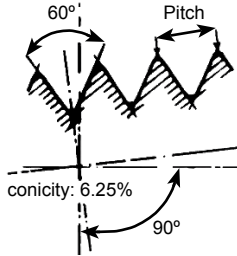
Thread Adapters: PG to Metric Threads*					
Part Numbers	Threads		Dimensions in Inches (mm)		
	Male Thread A	Female Thread B	D	TL	H
			Outer Diameter	Thread Length	Height
AP-0916-BR	PG 9	M16 x 1.5	.79 (20)	.24 (6)	.65 (16.5)
AP-1120-BR	PG 11	M20 x 1.5	.87 (22)	.26 (6.5)	.75 (19)
AP-1320-BR	PG 13/13.5	M20 x 1.5	.87 (22)	.26 (6.5)	.75 (19)
AP-1625-BR	PG 16	M25 x 1.5	1.06 (27)	.26 (6.5)	.83 (21)

Thread Adapters: Metric to PG Threads*					
Part Numbers	Threads		Dimensions in Inches (mm)		
	Male Thread A	Female Thread B	D	TL	H
			Outer Diameter	Thread Length	Height
AF-1609-BR	M16 x 1.5	PG 9	.79 (20)	.24 (6)	.65 (16.5)
AF-2011-BR	M20 x 1.5	PG 11	.87 (22)	.26 (6.5)	.75 (19)
AF-2013-BR	M20 x 1.5	PG 13/13.5	.87 (22)	.26 (6.5)	.75 (19)
AF-2016-BR	M20 x 1.5	PG 16	.94 (24)	.26 (6.5)	.75 (19)
AF-2516-BR	M25 x 1.5	PG 16	1.10 (28)	.26 (6.5)	.75 (19)
AF-2521-BR	M25 x 1.5	PG 21	1.18 (30)	.26 (6.5)	.83 (21)
AF-3229-BR	M32 x 1.5	PG 29	1.54 (39)	.28 (7)	.91 (23)

Thread Adapters: Metric to NPT Threads					
Part Numbers	Threads		Dimensions in Inches (mm)		
	Male Thread A	Female Thread B	F	TL	H
			Wrench Flat	Thread Length	Height
AM-1612-BR	M16 x 1.5	1/2" NPT	.94 (24)	.24 (6)	.91 (23)
AM-2012-BR	M20 x 1.5	1/2" NPT	.94 (24)	.24 (6)	.91 (23)
AM-2512-BR	M25 x 1.5	1/2" NPT	1.18 (30)	.28 (7)	.59 (15)
AM-2534-BR	M25 x 1.5	3/4" NPT	1.18 (30)	.28 (7)	1.07 (26)
AM-3210-BR	M32 x 1.5	1" NPT	1.57 (40)	.31 (8)	1.30 (33)
AM-3254-BR	M32 x 1.5	1-1/4" NPT	1.81 (46)	.31 (8)	1.30 (33)

NPT Threads

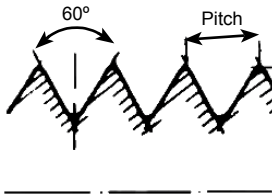
Thread Size	1/4" NPT	3/8" NPT	1/2" NPT	3/4" NPT	1" NPT	1-1/4" NPT	1-1/2" NPT	2" NPT
Major Dia. in Inches (mm)	.54 (13.72)	.675 (17.145)	.84 (21.336)	1.05 (26.67)	1.314 (33.40)	1.66 (42.164)	1.90 (48.26)	2.375 (60.325)
Pitch in Inches (mm)	.056 (1.41)	.056 (1.411)	.071 (1.814)	.071 (1.814)	.087 (2.208)	.087 (2.208)	.087 (2.208)	.087 (2.208)
Threads per Inch	18	18	14	14	11.5	11.5	11.5	11.5



- NPT Thread = National Pipe Thread
- Taper rate for all NPT threads is 1/16
- The taper on NPT threads allows them to form a seal when torqued as the flanks of the threads compress against each other, as opposed to straight thread fittings

Metric Threads

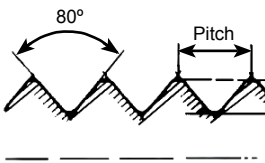
Thread Size	M6	M8	M10	M12	M16	M20	M25	M32	M40	M50	M63
Major Dia. in Inches (mm)	.24 (6)	.31 (8)	.39 (10)	.47 (12)	.63 (16)	.79 (20)	.98 (25)	1.26 (32)	1.57 (40)	1.97 (50)	2.48 (63)
Pitch in Inches (mm)	.04 (1)	.05 (1.25)	.06 (1.5)	.059 (1.5)	.059 (1.5)	.059 (1.5)	.059 (1.5)	.059 (1.5)	.059 (1.5)	.059 (1.5)	.059 (1.5)
Thru Hole in Inches (mm)	.251 (6.4)	.33 (8.4)	.413 (10.5)	.492 (12.5)	.63 (16)	.79 (20)	.98 (25)	1.26 (32)	1.57 (40)	1.97 (50)	2.48 (63)



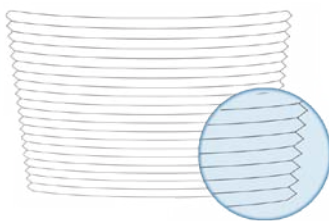
- World-wide most commonly used type thread
- Characterized by its major diameter and its pitch
- Designated by the letter M followed by the value of the nominal diameter and the pitch, both expressed in millimeters and separated by the multiplication sign 'x' (i.e. M12 x 1.5)

PG Threads

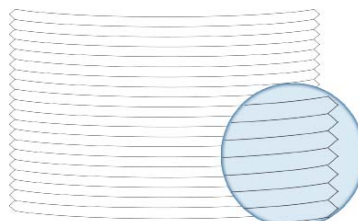
Thread Size	PG 7	PG 9	PG 11	PG 13 / 13.5	PG 16	PG 21	PG 29	PG 36	PG 42	PG 48
Major Dia. in Inches (mm)	.49 (12.5)	.60 (15.2)	.73 (18.6)	.80 (20.4)	.89 (22.5)	1.11 (28.3)	1.46 (37)	1.85 (47)	2.13 (54)	2.39 (59.3)
Pitch in Inches (mm)	.05 (1.27)	.056 (1.41)	.056 (1.41)	.056 (1.41)	.056 (1.41)	.062 (1.59)	.062 (1.59)	.062 (1.59)	.062 (1.59)	.062 (1.59)
Thru Hole in Inches (mm)	.50 (12.7)	.606 (15.4)	.74 (18.8)	.8149 (20.7)	.897 (22.8)	1.12 (28.6)	1.47 (37.4)	1.87 (47.5)	2.14 (54.5)	2.35 (59.8)



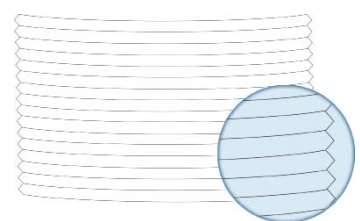
- PG Thread = Panzer-Gewinde (also Panzer-Rohr-Gewinde)
- German thread type
- Depth of thread smaller than NPT or Metric, but larger flank angle
- Straight thread



NPT Threads
(Tapered)



Metric Threads
(Straight)



PG Threads
(Straight)