

Nylon Liquid Tight Strain Relief Fittings

Standard - PG & NPT Threads



Nylon Strain Relief

Part Numbers				Cable Range	Thread Type & Size	Dimensions in Inches (mm)				
-40°F to 212°F (-40°C to 100°C)						A	B	C	TL	F ₁ /F
Dome Fittings		Flex Fittings		Inches (mm)	See Page 56 for thread specs	Clearance Hole	Body Length (Dome)	Body Length (Flex)	Thread Length	Wrench Flats
Black	Gray	Black	Gray			+ .01" (+.25 mm)				
CD07AA-BK	CD07AA-GY	CF07AA-BK	CF07AA-GY	.12 - .26 (3 - 6.5)	PG 7 / 1/4" NPT	.49 (12.5)	.83 (21)	2.13 (54)	.31 (8)	.59 (15)
CD07AR-BK	CD07AR-GY	CF07AR-BK	CF07AR-GY	.08 - .20 (2 - 5)						
CD09AA-BK	CD09AA-GY	CF09AA-BK	CF09AA-GY	.16 - .31 (4 - 8)	PG 9	.60 (15.2)	.87 (22)	2.48 (63)	.31 (8)	.75 (19)
CD09AR-BK	CD09AR-GY	CF09AR-BK	CF09AR-GY	.08 - .24 (2 - 6)						
CD11AA-BK	CD11AA-GY	CF11AA-BK	CF11AA-GY	.20 - .39 (5 - 10)	PG11	.73 (18.5)	.98 (25)	3.07 (78)	.31 (8)	.87 (22)
CD11AR-BK	CD11AR-GY	CF11AR-BK	CF11AR-GY	.12 - .28 (3 - 7)						
CD13AA-BK	CD13AA-GY	CF13AA-BK	CF13AA-GY	.24 - .47 (6 - 12)	PG 13 / 13.5	.80 (20.3)	1.06 (27)	3.54 (90)	.35 (9)	.94 (24)
CD13AR-BK	CD13AR-GY	CF13AR-BK	CF13AR-GY	.20 - .35 (5 - 9)						
CD16AA-BK	CD16AA-GY	CF16AA-BK	CF16AA-GY	.39 - .55 (10 - 14)	PG 16	.89 (22.5)	1.10 (28)	3.94 (100)	.39 (10)	1.06 (27)
CD16AR-BK	CD16AR-GY	CF16AR-BK	CF16AR-GY	.28 - .47 (7-12)						
CD21AA-BK	CD21AA-GY	CF21AA-BK	CF21AA-GY	.51 - .71 (13 - 18)	PG 21	1.12 (28.4)	1.22 (31)	4.49 (114)	.43 (11)	1.30 (33)
CD21AR-BK	CD21AR-GY	CF21AR-BK	CF21AR-GY	.35 - .63 (9 - 16)						
CD29AA-BK	CD29AA-GY	-	-	.71 - .98 (18 - 25)	PG 29	1.47 (37.3)	1.54 (39)	-	.43 (11)	1.65 (42)
CD29AR-BK	CD29AR-GY	-	-	.51 - .79 (13 - 20)						
CD36AA-BK	CD36AA-GY	-	-	.87 - 1.26 (22 - 32)	PG 36	1.85 (47)	1.89 (48)	-	.51 (13)	2.09 (53)
CD36AR-BK	CD36AR-GY	-	-	.79 - 1.02 (20 - 26)						
CD42AA-BK	CD42AA-GY	-	-	1.26 - 1.50 (32 - 38)	PG 42	2.13 (54.1)	1.93 (49)	-	.51 (13)	2.36 (60)
CD42AR-BK	CD42AR-GY	-	-	.98 - 1.22 (25 - 31)						
CD48AA-BK	CD48AA-GY	-	-	1.46 - 1.73 (37 - 44)	PG 48	2.34 (59.4)	1.93 (49)	-	.55 (14)	2.56 (65)
CD48AR-BK	CD48AR-GY	-	-	1.14 - 1.38 (29 - 35)						
CD09NA-BK	CD09NA-GY	CF09NA-BK	CF09NA-GY	.16 - .31 (4 - 8)	3/8" NPT	.68 (17.2)	.87 (22)	2.48 (63)	.59 (15)	.75 (19) / .87 (22)
CD09NR-BK	CD09NR-GY	CF09NR-BK	CF09NR-GY	.08 - .24 (2 - 6)						
CD13NA-BK	CD13NA-GY	CF13NA-BK	CF13NA-GY	.24 - .47 (6 - 12)	1/2" NPT	.83 (21.1)	1.06 (27)	3.54 (90)	.51 (13)	.94 (24)
CD13NR-BK	CD13NR-GY	CF13NR-BK	CF13NR-GY	.20 - .35 (5 - 9)						
CD16NA-BK	CD16NA-GY	CF16NA-BK	CF16NA-GY	.39 - .55 (10 - 14)	1/2" - E NPT	.83 (21.1)	1.10 (28)	3.94 (100)	.51 (13)	1.06 (27)
CD16NR-BK	CD16NR-GY	CF16NR-BK	CF16NR-GY	.28 - .47 (7 - 12)						
CD21NA-BK	CD21NA-GY	CF21NA-BK	CF21NA-GY	.51 - .71 (13 - 18)	3/4" NPT	1.05 (26.7)	1.22 (31)	4.49 (114)	.55 (14)	1.30 (33)
CD21NR-BK	CD21NR-GY	CF21NR-BK	CF21NR-GY	.35 - .63 (9 - 16)						
CD29NA-BK	CD29NA-GY	-	-	.71 - .98 (18 - 25)	1" NPT	1.35 (34.3)	1.54 (39)	-	.75 (19)	1.65 (42)
CD29NR-BK	CD29NR-GY	-	-	.51 - .79 (13 - 20)						
CD29LA-BK	CD29LA-GY	-	-	.71 - .98 (18 - 25)	1-1/4" NPT	1.65 (41.9)	1.54 (39)	-	.63 (16)	1.65 (42) / 1.81 (46)
CD29LR-BK	CD29LR-GY	-	-	.51 - .79 (13 - 20)						
CD36NA-BK	CD36NA-GY	-	-	.87 - 1.26 (22 - 32)	1-1/2" NPT	1.92 (48.7)	1.89 (48)	-	.79 (20)	2.09 (53)
CD36NR-BK	CD36NR-GY	-	-	.79 - 1.02 (20 - 26)						

The straight PG 7 thread fits a 1/4" NPT female or 1/2"-20 UNF thread.
 *UL f1 (746C) rating applies to Black Nylon Fittings only.

Dome Fittings also available with the following approvals:



www.SealconEX.com



Optional Locking Nuts, O-Rings & Other Accessories starting on Page 29 - 40.

For Material Specifications and Approval Information refer to page 52.

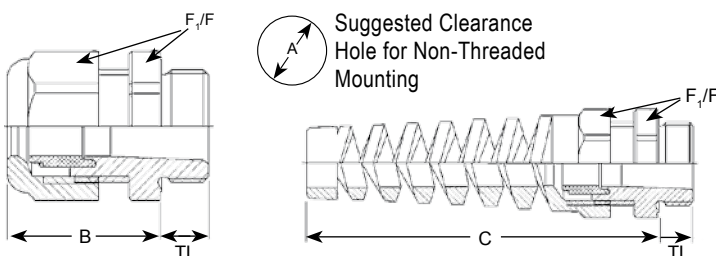


Part Numbers				Cable Range	Thread Type & Size	Dimensions in Inches (mm)				
-40°F to 212°F (-40°C to 100°C)						A	B	C	TL	F ₁ /F
Dome Fittings		Flex Fittings		Inches (mm)	See Page 56 for thread specs	Clearance Hole	Body Length (Dome)	Body Length (Flex)	Thread Length	Wrench Flats
Black	Gray	Black	Gray			+ .01" (+.25 mm)				
CD12MA-BK	CD12MA-GY	CF12MA-BK	CF12MA-GY	.12 - .26 (3 - 6.5)	M12 X 1.5	.47 (12)	.83 (21)	2.13 (54)	.31 (8)	.59 (15)
CD12MR-BK	CD12MR-GY	CF12MR-BK	CF12MR-GY	.08 - .20 (2 - 5)						
CD16MA-BK	CD16MA-GY	CF16MA-BK	CF16MA-GY	.16 - .31 (4 - 8)	M16 X 1.5	.63 (16)	.87 (22)	2.48 (63)	.31 (8)	.75 (19)
CD16MR-BK	CD16MR-GY	CF16MR-BK	CF16MR-GY	.08 - .24 (2 - 6)						
CD17MA-BK	CD17MA-GY	CF17MA-BK	CF17MA-GY	.20 - .39 (5 - 10)	M16 X 1.5 Enlarged	.63 (16)	.98 (25)	3.07 (78)	.31 (8)	.87 (22)
CD17MR-BK	CD17MR-GY	CF17MR-BK	CF17MR-GY	.12 - .28 (3 - 7)						
CD20MA-BK	CD20MA-GY	CF20MA-BK	CF20MA-GY	.24 - .47 (6 - 12)	M20 X 1.5	.79 (20)	1.06 (27)	3.54 (90)	.35 (9)	.94 (24)
CD20MR-BK	CD20MR-GY	CF20MR-BK	CF20MR-GY	.20 - .35 (5 - 9)						
CD22MA-BK	CD22MA-GY	CF22MA-BK	CF22MA-GY	.39 - .55 (10 - 14)	M20 X 1.5 Enlarged	.79 (20)	1.10 (28)	3.94 (100)	.39 (10)	1.06 (27)
CD22MR-BK	CD22MR-GY	CF22MR-BK	CF22MR-GY	.28 - .47 (7-12)						
CD25MA-BK	CD25MA-GY	CF25MA-BK	CF25MA-GY	.51 - .71 (13 - 18)	M25 X 1.5	.98 (25)	1.22 (31)	4.49 (114)	.43 (11)	1.30 (33)
CD25MR-BK	CD25MR-GY	CF25MR-BK	CF25MR-GY	.35 - .63 (9 - 16)						
CD32MA-BK	CD32MA-GY	-	-	.71 - .98 (18 - 25)	M32 X 1.5	1.26 (32)	1.54 (39)	-	.43 (11)	1.65 (42)
CD32MR-BK	CD32MR-GY	-	-	.51 - .79 (13 - 20)						
CD40MA-BK	CD40MA-GY	-	-	.87 - 1.26 (22 - 32)	M40 X 1.5	1.57 (40)	1.89 (48)	-	.51 (13)	2.09 (53)
CD40MR-BK	CD40MR-GY	-	-	.79 - 1.02 (20 - 26)						
CD50MA-BK	CD50MA-GY	-	-	1.26 - 1.50 (32 - 38)	M50 X 1.5	1.97 (50)	1.93 (49)	-	.51 (13)	2.36 (60)
CD50MR-BK	CD50MR-GY	-	-	.98 - 1.22 (25 - 31)						
CD63MA-BK	CD63MA-GY	-	-	1.46 - 1.73 (37 - 44)	M63 X 1.5	2.48 (63)	1.93 (49)	-	.55 (14)	2.56 (65) / 2.68 (68)
CD63MR-BK	CD63MR-GY	-	-	1.14 - 1.38 (29 - 35)						

*UL f1 (746C) rating applies to Black Nylon Fittings only.



Installs in either knockout or threaded holes.



Dome Fittings also available with the following approvals:



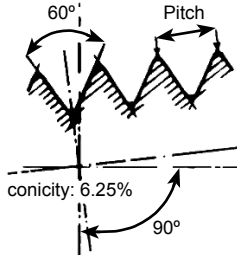
www.SealconEX.com



Optional Locking Nuts, O-Rings & Other Accessories starting on Page 29 - 40.

NPT Threads

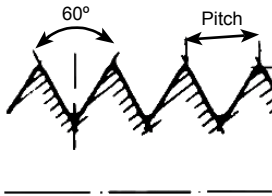
Thread Size	1/4" NPT	3/8" NPT	1/2" NPT	3/4" NPT	1" NPT	1-1/4" NPT	1-1/2" NPT	2" NPT
Major Dia. in Inches (mm)	.54 (13.72)	.675 (17.145)	.84 (21.336)	1.05 (26.67)	1.314 (33.40)	1.66 (42.164)	1.90 (48.26)	2.375 (60.325)
Pitch in Inches (mm)	.056 (1.41)	.056 (1.411)	.071 (1.814)	.071 (1.814)	.087 (2.208)	.087 (2.208)	.087 (2.208)	.087 (2.208)
Threads per Inch	18	18	14	14	11.5	11.5	11.5	11.5



- NPT Thread = National Pipe Thread
- Taper rate for all NPT threads is 1/16
- The taper on NPT threads allows them to form a seal when torqued as the flanks of the threads compress against each other, as opposed to straight thread fittings

Metric Threads

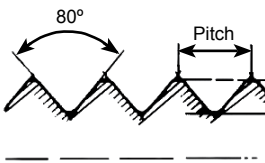
Thread Size	M6	M8	M10	M12	M16	M20	M25	M32	M40	M50	M63
Major Dia. in Inches (mm)	.24 (6)	.31 (8)	.39 (10)	.47 (12)	.63 (16)	.79 (20)	.98 (25)	1.26 (32)	1.57 (40)	1.97 (50)	2.48 (63)
Pitch in Inches (mm)	.04 (1)	.05 (1.25)	.06 (1.5)	.059 (1.5)	.059 (1.5)	.059 (1.5)	.059 (1.5)	.059 (1.5)	.059 (1.5)	.059 (1.5)	.059 (1.5)
Thru Hole in Inches (mm)	.251 (6.4)	.33 (8.4)	.413 (10.5)	.492 (12.5)	.63 (16)	.79 (20)	.98 (25)	1.26 (32)	1.57 (40)	1.97 (50)	2.48 (63)



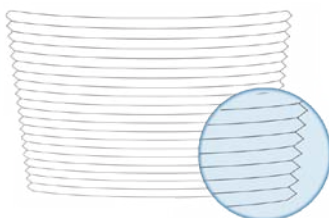
- World-wide most commonly used type thread
- Characterized by its major diameter and its pitch
- Designated by the letter M followed by the value of the nominal diameter and the pitch, both expressed in millimeters and separated by the multiplication sign 'x' (i.e. M12 x 1.5)

PG Threads

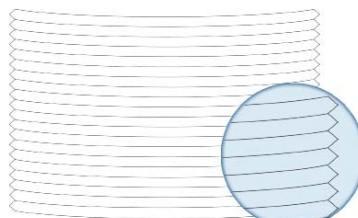
Thread Size	PG 7	PG 9	PG 11	PG 13 / 13.5	PG 16	PG 21	PG 29	PG 36	PG 42	PG 48
Major Dia. in Inches (mm)	.49 (12.5)	.60 (15.2)	.73 (18.6)	.80 (20.4)	.89 (22.5)	1.11 (28.3)	1.46 (37)	1.85 (47)	2.13 (54)	2.39 (59.3)
Pitch in Inches (mm)	.05 (1.27)	.056 (1.41)	.056 (1.41)	.056 (1.41)	.056 (1.41)	.062 (1.59)	.062 (1.59)	.062 (1.59)	.062 (1.59)	.062 (1.59)
Thru Hole in Inches (mm)	.50 (12.7)	.606 (15.4)	.74 (18.8)	.8149 (20.7)	.897 (22.8)	1.12 (28.6)	1.47 (37.4)	1.87 (47.5)	2.14 (54.5)	2.35 (59.8)



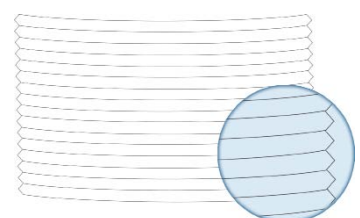
- PG Thread = Panzer-Gewinde (also Panzer-Rohr-Gewinde)
- German thread type
- Depth of thread smaller than NPT or Metric, but larger flank angle
- Straight thread



NPT Threads
(Tapered)



Metric Threads
(Straight)



PG Threads
(Straight)